

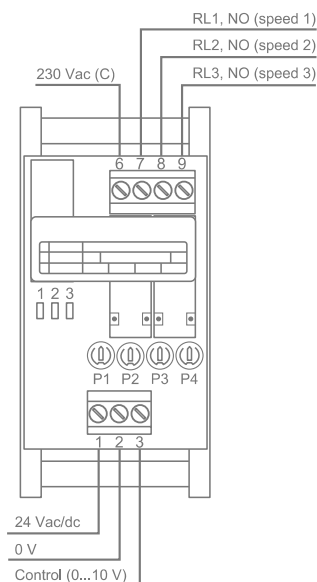
## RELAY MODULE FCRY 3

FCRY 3 is a relay module that converts 0...10 Vdc input signal to contact outputs. FCRY 3 can control a fan coil (fan speed), for example.

Relays are interlocked so that only one relay (RL1, RL2 or RL3) can be active at a time. Active relay is indicated by an indicator light (1, 2 or 3).

**IMPORTANT:** The device must be installed inside a suitable housing that cannot be opened without using tools.

### Wiring:



### Adjusting the relay set points

- Set the hysteresis with the trimmer P4.  
**NOTE:** The hysteresis is common for all relays.  
*The P4 default value is 0.5 V.*
- Set the RL3 relay set point with the trimmer P3.  
*The P3 default value is 7.5 V.*
- Set the RL2 relay set point with the trimmer P2.  
The P2 default value is 0.71.  
The default set point is calculated as follows:  
 $RL2 = P2 \times (P3 - P4) = 0.71 \times (7.5 - 0.5) = 5.0 \text{ V}$ .
- Set the RL1 relay set point with the trimmer P1.  
The P1 default value is 0.56.  
The default set point is calculated as follows:  
 $RL1 = P1 \times (RL2 - P4) = 0.56 \times (5.0 - 0.5) = 2.5 \text{ V}$ .



### Technical data

Supply	24 Vac/dc, 1.5 VA
Input	0...10 Vdc, < 0.2 mA
Relay contacts	230 Vac, 8 A res.
Factory settings	
RL1 set point	2.5 V
RL2 set point	5.0 V
RL3 set point	7.5 V
hysteresis	0.5 V
Set point trimmer ranges	
P1 (for RL1)	0.1...1
P2 (for RL2)	0.5...1
P3 (for RL3)	4...10 V
P4 (hysteresis)	0.2...1 V
Housing	IP20, for 35 mm DIN rail
Dimensions (w x h x d)	45 x 51 x 92 mm

### Ordering guide:

Model	Product number	Description
FCRY 3	1183070	fan coil relay, 0...10 V control

Products fulfill the requirements of directives 73/23/EEC and 2004/108/EC and are in accordance with the standards EN60947, EN61000-6-2001: 6 (Emission) and EN61000-3-2001: 2 (Immunity).